

NPD0835

8.4" IP68 & IP65 Sunlight Readable Marine Display

NAVPIXEL NPD0835, the high-performance, rugged touch monitor, is specially engineered to survive from the most demanding working environment. Housed in a milled billet aluminum case, the slim-profile NAVPIXEL NPD0835 is light weight and watertight. The front-mounted sunlight readable touch screen makes the industrial rugged monitor vividly and user-friendly. In addition, the high power efficiency and low heat design guarantee the stability and longevity required for mission critical deployment.

Features:

- 1000 nits Sunlight Readable LCD
- Long Life, Low Power Consumption LED Backlight
- Wide Operating Temperature
- Advanced Optical Bonding (AOT)
- High Shock & Vibration Resistance
- IR Touch Support (front IP65 design)
- AR glass support (IP68 design)
- 9-36V DC Input

Application:

- Marine



Specifications

V1

Model Number	NPD0835
Description	8.4" IP68 Sunlight Readable Marine Display
Backlight	LED Backlight
Active Display Area	170.4 x 127.8mm
Brightness	1000 cd/m ²
Resolution	800x600(SVGA)
Contrast Ratio	450:1
Pixel Pitch (mm)	0.213(H) x 0.213 (V)
Viewing Angle	130 (H), 115(V)
Display Color	16.2M
Response Time	35ms
Inputs	VGAX1
PIP Support	NA
Mechanical	
IP Rating	Waterproof IP68 & IP65 standards
Construction	Rugged Aluminum Alloy Chassis
Mounting	VESA mount
Dimension	250(W)x200(H)x64(D)
Net Weight	3Kg
Power	
Voltage	DC Input Voltage: DC 9~36V
Power Consumption	9.5W
Environmental	
Operating Temperature	-20°C~60°C
Non-Operating Temperature	-30°C~75°C
Certification	CE / FCC
Marine Type Approval	BV Rule IACES-E10 certification, comply with IEC 60945

Specifications are subject to change without notice.

All brands or product names are trademarks or registered trademarks of their respective companies.

製品のお見積り・お問い合わせは

株式会社プラズモニクジャパンまでご連絡下さい。

✉ info@plazmonic.jp

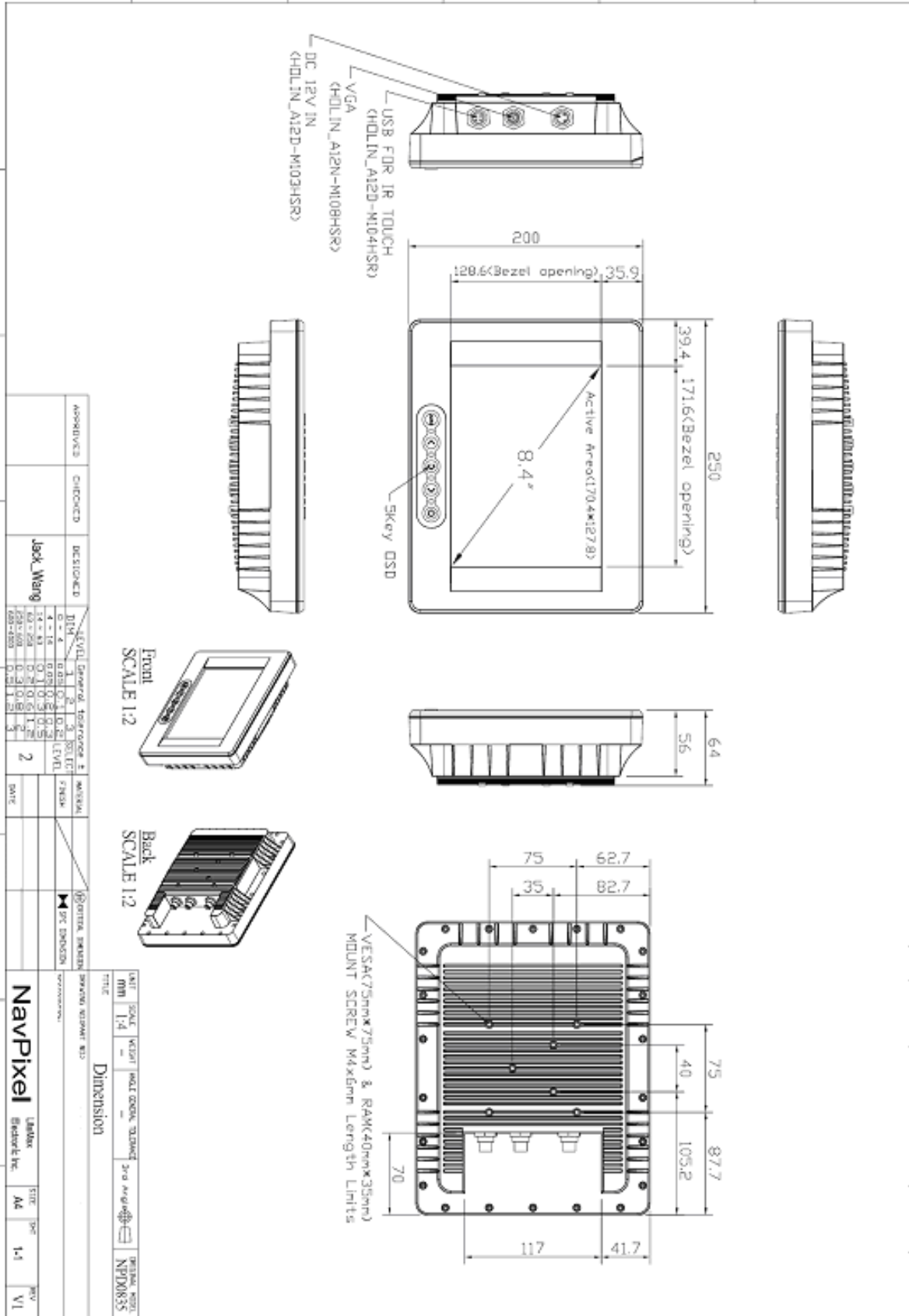
☎ 045(663)1402



Mechanical Drawing

Outline Dimensions

Unit:mm





Ordering Information

Part Number	Description
NPD0835-EGAW-A21	8.4",1000nits,SVGA,LID08A05.O/F,AR Glass,AD5621G,WP,AOT,P,V02
NPD0835-ETAW-A21	8.4",1000nits,SVGA,T/IR-USB.LID08A05,O/F,AD5621G,WP,AOT,V02
NPD0835-ETAW-A23	8.4",1000nits,SVGA,Touch-usb.LID08A05,AD5621G,O/F,WP,AOT,Carton w/o logo,V02

Optional Accessories

Part Number	Description
840612051103	ADAPTER,12V,5A,60W.KPA-060F,DC Plug,2.1*5.5mm.P
810118301000	CABLE,VGA,1830mm.D-SUB15P MALE TO HOLIN FEMALE.8P,WATERPROOF,P
810518301000	CABLE,OTHER,USB.USB A TYPE MALE TO HOLIN.FEMALE 4P,WATERPROOF,P
810618301000	CABLE,POWER,DC,1830mm.DC JACK TO HOLIN FEMAL 3P.WATERPROOF,P
810618301010	CABLE.POWER.AC.1830mm USA type
810618301090	CABLE,POWER,AC,1830mm Europe type
810618301050	CABLE.POWER.AC.1830mm UK type
810618301170	CABLE.POWER,AC,1830mm Australia type
810618301030	CABLE.POWER.AC.1830mm Japan type

