



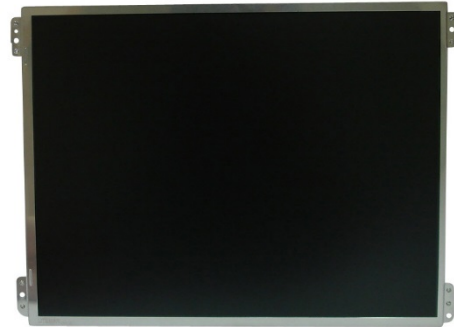
DLF1092 / DLH1092 V2

10.4" TFT LCD, LED Backlight 400nits,XGA

10.4" TFT LCD panel, built-in 1000 nits high bright for sunlight readable LCD display, high transmittance color filter, high transmission polarizing plates, Low Power Consumption, suitable for kiosk, advertising, POS, marline, transportation, gaming, studio display, gas pump.

Key Features

- Sunlight Readable
- LED Backlight
- High Shock & Vibration Resistance
- Low Power Consumption
- Wide Operation Temperature. (-30°C ~ 80°C)
- High Uniformity (90%)
- Low EMI Noise
- Wide Dimming
- Life Expectancy (70,000hrs)



Specifications

V1

Model No.	DLF1092 V2	DLH1092 V2
Description	10.4" TFT LCD, LED Backlight 1000 nits, XGA	
Display Area (mm)	210.4 (H) x 157.8(V) mm	
Brightness	400 cd/m ²	
Resolution	1024 x 768 (XGA)	
Contrast Ratio	3400: 1	
Pixel Pitch (mm)	0.2055(H) x 0.2055(V)	
Viewing Angle	+89°~-89°(H), +89°~-89°(V)	
Display Colors	16.2M colors	
Response Time (Typical)	30ms (Typical)	
Sync	LVDS	
Power Consumption	6.99W / 9.99W	
Dimensions (mm)	238.6(W) x 173.2(H) x 6.41(D)mm	
Weight (Net)	250g / 350g	
LED Driving Board	LID 10A	
Control Board (Optional)	<input type="checkbox"/> AD6038G <input type="checkbox"/> AD6038GA <input type="checkbox"/> AD6038GD <input type="checkbox"/> AD2662GDHVA <input type="checkbox"/> AD2662GDVAR	
<input type="checkbox"/> AD6038G	VGA	
<input type="checkbox"/> AD6038GA	VGA+Audio	
<input type="checkbox"/> AD6038GD	VGA+DVI	
<input type="checkbox"/> AD2662GDHVA	VGA+CVBS+S-Video+Audio (Optional DVI / Component /HDMI)	
<input type="checkbox"/> AD2662GDVAR	VGA+DVI (Optional S-Video/ Component / Audio)	
F / R Control Button	<input type="checkbox"/> 5 Key <input type="checkbox"/> 4 Key	
<input type="checkbox"/> 5 Key	Power Switch, Menu, Select (+,-), Auto	
<input type="checkbox"/> 4 Key	Power Switch, Menu, Select (+,-),	
OSD Menu	Brightness, Contrast, H/V Position, Color, Phase, Clock...	
Optional	<input type="checkbox"/> AOT <input type="checkbox"/> Touch Screen	

Specifications are subject to change without notice.

All brands or product names are trademarks or registered trademarks of their respective companies.

DLF= Panel+LED Driving Board

DLH= Panel+LED Driving Board+Control Board

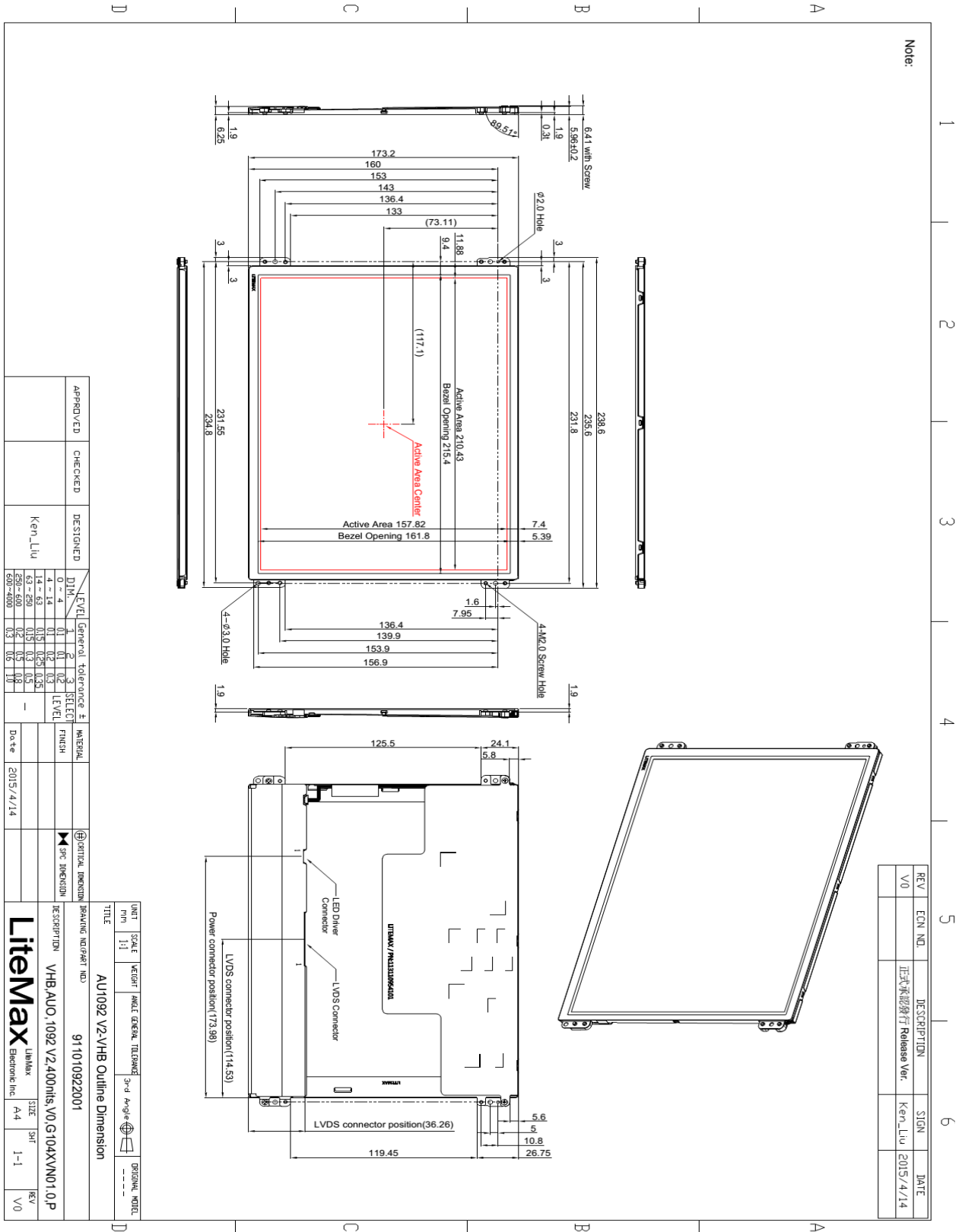
製品のお見積り・お問い合わせは
株式会社プラズモニックジャパン までご連絡ください。
連絡先：(045) 663 1402 メール：info@plazmonic.jp



Mechanical Drawing

Outline Dimensions

Unit:mm



製品のお見積り・お問い合わせは
株式会社プラズモニックジャパン までご連絡ください。
連絡先：(045) 663 1402 メール：info@plazmonic.jp



Ordering Information

Model Name	Description
DLF1092-ENN-A21	10.4",400nits,XGA,5 in 1,V03
DLF1095-ENN-A22	10.4",1000nits,XGA,25 in 1,V03
DLH1092-ENN-I21	10.4",400nits,XGA,AD6038GD,DC 12V,5 in 1,V03

Optional Accessories

Part Number	Description
840612051210	ADAPTER,AC/DC,12V/5.4A,65W,Atech OEM A065112-TDx,4P SLIDING CAP,P
810618301010	CABLE.POWER.AC.1830mm USA type
810618301090	CABLE,POWER,AC,1830mm Europe type
810618301050	CABLE.POWER.AC.1830mm UK type
810618301170	CABLE.POWER,AC,1830mm Australia type
810618301030	CABLE.POWER.AC.1830mm Japan type

製品のお見積り・お問い合わせは
 株式会社プラズモニックジャパン までご連絡ください。
 連絡先：(045) 663 1402 メール：info@plazmonic.jp