



**SLD 1744 V3**  
**17" TFT LCD Monitor, LED Backlight 1000nits,SXGA**

SLD1744 V3 TFT LCD monitor, built-in 1000 nits high brightness for sunlight readable display. It offers the best visibility, performance and cost effective value. The high level of brightness together with the optimal contrast ratio renders high quality images and enhances legibility. With its fast response time and LED backlight technology, the monitor brings remarkable display quality and durability for your applications. Suitable for marine, military, medical, transportation, and industrial application.

**Key Features**

- Sunlight Readable
- LED Backlight
- High Shock & Vibration Resistance
- Low Power Consumption
- High Uniformity
- Low EMI Noise
- Wide Dimming
- Life Expectancy

**Applications**

Marline, Military,  
 Medical, Transportation  
 Industrial



**Specifications**

V1

<b>Model No.</b>	<b>SLD1744 V3</b>
<b>Description</b>	17" TFT LCD monitor, LED Backlight 1000 nits, SXGA
<b>Display Area (mm)</b>	337.92 x 270.336 mm
<b>Brightness</b>	1000 cd/m <sup>2</sup>
<b>Resolution</b>	1280x1024 (SXGA)
<b>Contrast Ratio</b>	1000 : 1
<b>Pixel Pitch (mm)</b>	0.264(H) x 0.264(V)
<b>Viewing Angle</b>	+80°~-80°(H), +80°~-80°(V)
<b>Display Colors</b>	16.7M
<b>Response Time (Typical)</b>	5ms
<b>Power Input</b>	DC 12V
<b>Power Consumption</b>	21.1W
<b>Dimensions (mm)</b>	436x373x61.6
<b>Weight (Net)</b>	5.83Kg
<b>LED Driving Board</b>	LID17A
<b>Control Board (Optional)</b>	<input type="checkbox"/> AD6038GD
<input type="checkbox"/> AD6038GD	VGA+DVI
<b>F / R Control Button</b>	<input type="checkbox"/> 5 Key <input type="checkbox"/> 4 Key
<input type="checkbox"/> 5 Key	Power Switch, Menu, Select (+,-), Auto
<input type="checkbox"/> 4 Key	Power Switch, Menu, Select (+,-),
<b>OSD Menu</b>	Brightness, Contrast, H/V Position, Color, Phase, Clock...
<b>Optional</b>	<input type="checkbox"/> AOT <input type="checkbox"/> Touch Screen <input type="checkbox"/> Waterproof

Specifications are subject to change without notice.  
 All brands or product names are trademarks or registered trademarks of their respective companies.

**SLD= Panel+LED Driving Board+Control Board**

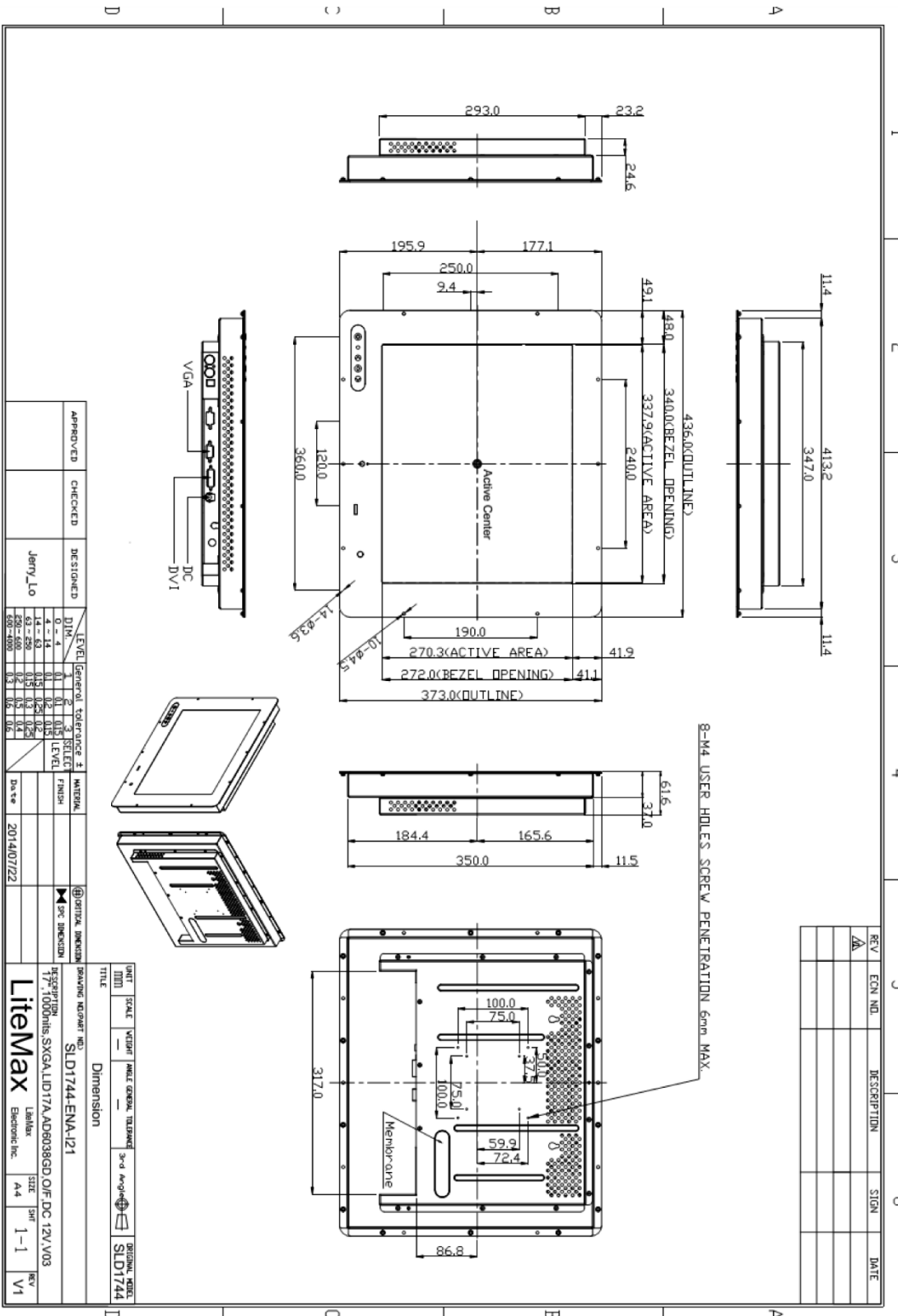
製品のお見積り・お問い合わせは  
 株式会社プラズモニクジャパン までご連絡ください。  
 連絡先 : (045) 663 1402 メール : info@plazmonic.jp



Mechanical Drawing

Outline Dimensions

Unit:mm



APPROVED	CHECKED	DESIGNED BY	Jerry_Lo
LEVEL		General	Tolerance
0	±0.1	1	±0.15
1	±0.15	2	±0.2
2	±0.2	3	±0.25
3	±0.25	4	±0.3
4	±0.3	5	±0.35
5	±0.35	6	±0.4
6	±0.4	7	±0.45
7	±0.45	8	±0.5
8	±0.5	9	±0.55
9	±0.55	10	±0.6

DATE	2014/07/22
SCALE	1:1
TITLE	Dimension
UNIT	mm
DESCRIPTION	SLD1744-ENA-121
DATE	2014/07/22
SCALE	1:1
TITLE	Dimension
UNIT	mm
DESCRIPTION	SLD1744

REV	ECN NO.	DESCRIPTION	SIGN	DATE
1				
2				
3				
4				
5				
6				
7				
8				
9				
10				



### Ordering Information

Part Number	Description
SLD1744-ENA-I21	17",1000nits,SXGA,LID17A.AD6038GD,O/F,DC 12V,V03

### Optional Accessories

Part Number	Description
840612051100	ADAPTER.12V.5A.60W.EA1050A,P
810618301010	CABLE.POWER.AC.1830mm USA type
810618301090	CABLE.POWER,AC,1830mm Europe type
810618301050	CABLE.POWER.AC.1830mm UK type
810618301170	CABLE.POWER,AC,1830mm Australia type
810618301030	CABLE.POWER.AC.1830mm Japan type

製品のお見積り・お問い合わせは  
株式会社プラズモニックジャパン までご連絡ください。  
連絡先：(045) 663 1402 メール：info@plazmonic.jp