



SLD 1745 17" TFT LCD Monitor, 1000nits, SXGA

SLD1745 TFT LCD monitor, built-in 1000 nits high brightness for sunlight readable display. It offers the best visibility, performance and cost effective value. The high level of brightness together with the optimal contrast ratio renders high quality images and enhances legibility. With its fast response time and backlight technology, the monitor brings remarkable display quality and durability for your applications. Suitable for marine, military, medical, transportation, and industrial application.

Key Features

- Sunlight Readable
- Wide Viewing Angle
- High Contrast Ratio
- Long Lamp Life
- Fast Response Time
- Thin and Light

Applications

Marine, Military,
Medical, Transportation
Industrial



Specifications

V1

Model No.	SLD1745
Description	17" TFT LCD Monitor, 1000 nits, SXGA
Display Area (mm)	337.92 x 270.336 mm
Brightness	1000 cd/m ²
Resolution	1280x1024 (SXGA)
Contrast Ratio	800 : 1
Pixel Pitch (mm)	0.264(H) x 0.264(V)
Viewing Angle	+80°~-80°(H), +80°~-80°(V)
Display Colors	16.7M
Response Time (Typical)	5ms
Power Input	DC-12V
Power Consumption	50W
Dimensions (mm)	436x373x61.6
Weight (Net)	5.77Kg
Control Board (Optional)	<input type="checkbox"/> AD5621GA <input type="checkbox"/> AD5621GD <input type="checkbox"/> AD5766GDVA <input type="checkbox"/> AD2662GDVAR
<input type="checkbox"/> AD5621GA	VGA+Audio
<input type="checkbox"/> AD5621GD	VGA+DVI
<input type="checkbox"/> AD5766GDVA	VGA+CVBS+S-Video+Audio (Optional DVI / Component)
<input type="checkbox"/> AD2662GDVAR	VGA+DVI (Optional S-Video/ Component / Audio)
F / R Control Button	<input type="checkbox"/> 5 Key <input type="checkbox"/> 4 Key
<input type="checkbox"/> 5 Key	Power Switch, Menu, Select (+,-), Auto
<input type="checkbox"/> 4 Key	Power Switch, Menu, Select (+,-),
OSD Menu	Brightness, Contrast, H/V Position, Color, Phase, Clock...
Optional	<input type="checkbox"/> AOT <input type="checkbox"/> Touch Screen <input type="checkbox"/> Waterproof

Specifications are subject to change without notice.

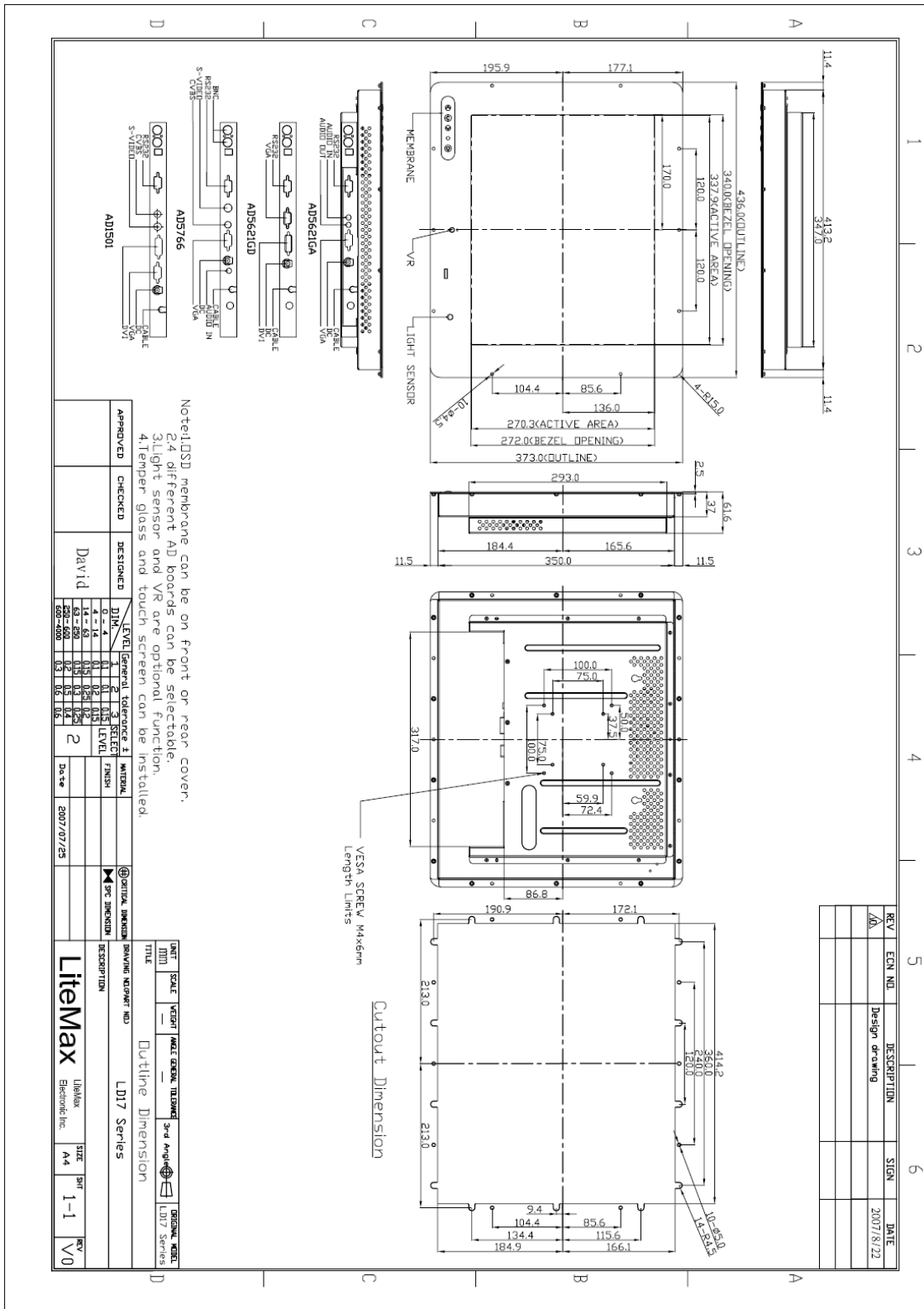
All brands or product names are trademarks or registered trademarks of their respective companies.

Mechanical Drawing



Outline Dimensions

Unit:mm



Note:LDSD membrane can be on front or rear cover.
 24 different AD boards can be selectable.
 3light sensor and VR are optional function.
 4Temper glass and touch screen can be installed.

APPROVED	CHECKED	DESIGNED	DATE	REV	DATE
		David	2007/07/25	2	2007/07/25

LEVEL	GENERAL TOLERANCE	FLUSH	WITTEVAL
0	±0.1	0.1	0.1
1	±0.15	0.15	0.15
2	±0.2	0.2	0.2
3	±0.3	0.3	0.3
4	±0.4	0.4	0.4
5	±0.5	0.5	0.5
6	±0.6	0.6	0.6
7	±0.8	0.8	0.8
8	±1.0	1.0	1.0
9	±1.2	1.2	1.2
10	±1.5	1.5	1.5
11	±2.0	2.0	2.0
12	±2.5	2.5	2.5
13	±3.0	3.0	3.0
14	±4.0	4.0	4.0
15	±5.0	5.0	5.0
16	±6.0	6.0	6.0
17	±8.0	8.0	8.0
18	±10.0	10.0	10.0
19	±12.0	12.0	12.0
20	±15.0	15.0	15.0
21	±20.0	20.0	20.0
22	±25.0	25.0	25.0
23	±30.0	30.0	30.0
24	±40.0	40.0	40.0
25	±50.0	50.0	50.0
26	±60.0	60.0	60.0
27	±80.0	80.0	80.0
28	±100.0	100.0	100.0
29	±120.0	120.0	120.0
30	±150.0	150.0	150.0
31	±200.0	200.0	200.0
32	±250.0	250.0	250.0
33	±300.0	300.0	300.0
34	±400.0	400.0	400.0
35	±500.0	500.0	500.0
36	±600.0	600.0	600.0

REV	ECN NO.	DESCRIPTION	SIGN	DATE
1/0		Design drawing		2007/8/22

Ordering Information



Part Number	Description
SLD1745-SGA-A01	17", 1000nits, SXGA, AR glass, O/F, AD5621GA, v01
SLD1745-SGAL-A01	17", 1000nits, SXGA, AR glass, O/F, AD5621GA, LS, v01
SLD1745-SGAV-A01	17".1000nits,SXGA,AR Glass.O/F,VR,AD5621G,V01
SLD1745-SGB-A02	17",1000nits,SXGA,AR glass.O/B,AD5621GA,v02
SLD1745-SNA-A01	17"1000nits,SXGA,O/F,AD5621G.v01
SLD1745-SNA-B01	17",1000nits,SXGA.O/F,AD5621GD,V01
SLD1745-SNA-C01	17",1000nits,SXGA,O/F.AD5766GDVA,V01
SLD1745-STA-C01	17",1000nits,SXGA.T/LY-R-5W-RS232,O/F.AD5766GDV,v01

Optional Accessories

Part Number	Description
840612071300	ADAPTER.12V,6.66A,80W,SPU65-105,P
810618301010	CABLE.POWER.AC.1830mm USA type
810618301090	CABLE,POWER,AC,1830mm Europe type
810618301050	CABLE.POWER.AC.1830mm UK type
810618301170	CABLE.POWER,AC,1830mm Australia type
810618301030	CABLE.POWER.AC.1830mm Japan type