



## SLD1768 V2 17" TFT LCD, LED Backlight 1600nits,SXGA(1280x1024)

17" TFT LCD panel, built-in 1600 nits high bright for sunlight readable LCD display, high transmittance color filter, high transmission polarizing plates, Low Power Consumption, suitable for kiosk, advertising, POS, marine, transportation, gaming, studio display, gas pump.

### Key Features

- Sunlight Readable
- LED Backlight
- SXGA(1280x1024) High Definition
- High Shock & Vibration Resistance
- Low Power Consumption
- High Uniformity
- Low EMI Noise
- Wide Dimming
- Life Expectancy



## Specifications

V1

<b>Model No.</b>	SLD1768 V2
<b>Description</b>	17" TFT LCD, LED Backlight 1600nits,SXGA(1280x1024)
<b>Display Area (mm)</b>	337.9(H) x 270.3(V) mm
<b>Brightness</b>	1600 cd/m <sup>2</sup>
<b>Resolution</b>	1280x1024 (SXGA)
<b>Contrast Ratio</b>	1000 : 1
<b>Pixel Pitch (mm)</b>	0.264(H) x 0.264(V)
<b>Pixel Pre Inch (PPI)</b>	96
<b>Viewing Angle</b>	170°(H), 160°(V)
<b>Color Saturation (NTSC)</b>	83%
<b>Display Colors</b>	16.7M
<b>Response Time (Typical)</b>	5ms
<b>Sync</b>	LVDS
<b>Operating Temperature</b>	0°C ~ 50°C
<b>Storage Temperature</b>	-20°C ~ 60°C
<b>Power Consumption</b>	32.5W
<b>Dimensions (mm)</b>	358.5x298.3x35.9mm
<b>Weight (Net)</b>	2.5kg
<b>LED Driving Board</b>	LID17A
<b>Control Board (Optional)</b>	<input type="checkbox"/> AD2662GDVAR
<input type="checkbox"/> AD2662GDVAR	VGA+DVI (Optional S-Video/ Component / Audio)
<b>F / R Control Button</b>	<input type="checkbox"/> 4 Key
<input type="checkbox"/> 4 Key	Power Switch, Menu, Select (+,-),
<b>OSD Menu</b>	Brightness, Contrast, H/V Position, Color, Phase, Clock...
<b>Optional</b>	<input type="checkbox"/> AOT <input type="checkbox"/> Touch Screen

*Specifications are subject to change without notice.*

*All brands or product names are trademarks or registered trademarks of their respective companies.*

**SLD** = Panel+LED Driving Board+Control Board

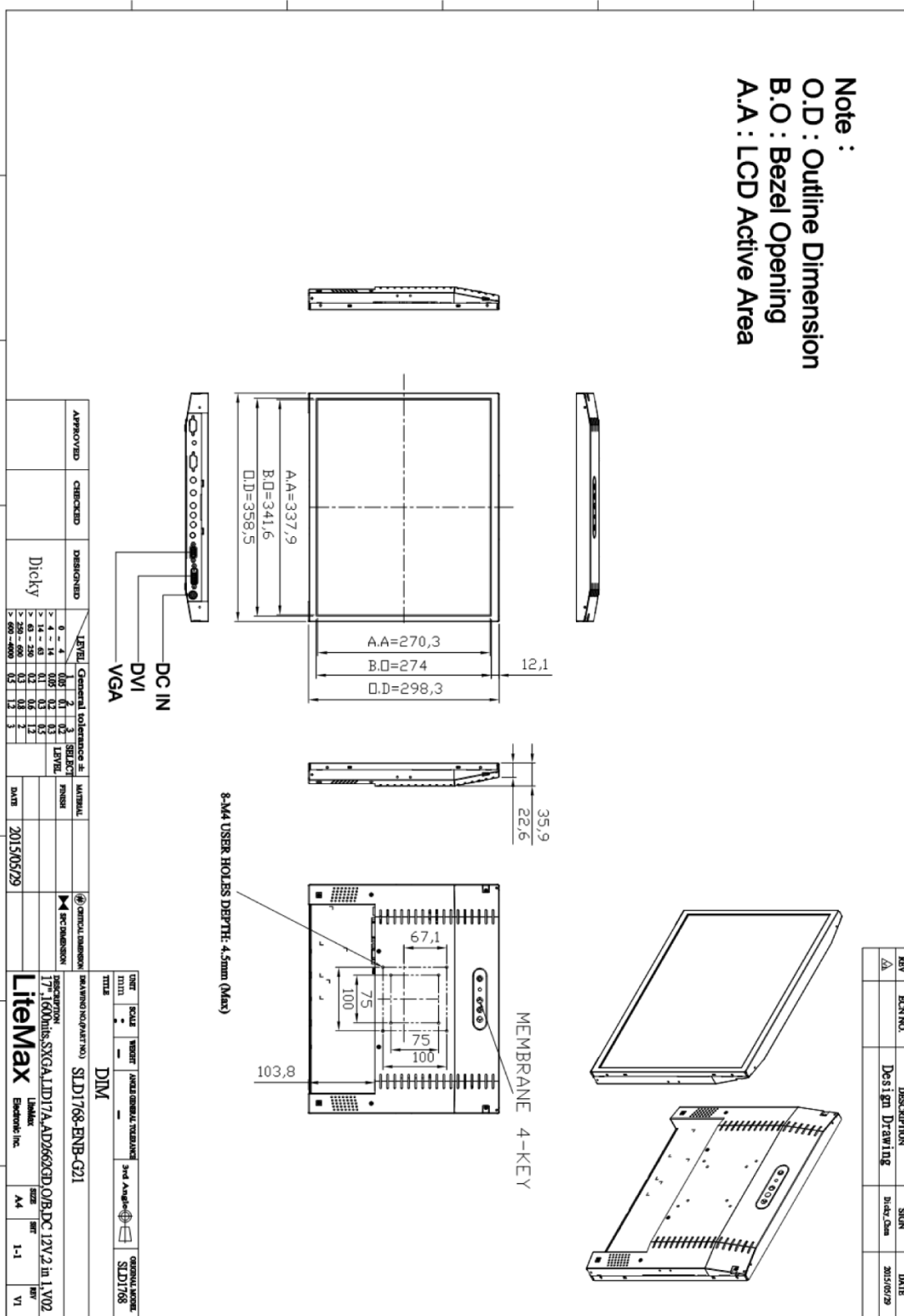
製品のお見積り・お問い合わせは  
株式会社プラズモニックジャパン までご連絡ください。  
連絡先：(045) 663 1402 メール：info@plazmonic.jp



Mechanical Drawing

Outline Dimensions

Unit:mm





### Ordering Information

Part Number	Description
SLD1768-ENB-G21	17",1600nits,SXGA,LID17A,AD2662GD,O/B,DC12V,2 in 1,V02

### Optional Accessories

Part Number	Description
840612051100	ADAPTER.12V.5A.60W.EA1050A,P
810618301010	CABLE.POWER.AC.1830mm USA type
810618301090	CABLE,POWER,AC,1830mm Europe type
810618301050	CABLE.POWER.AC.1830mm UK type
810618301170	CABLE.POWER,AC,1830mm Australia type
810618301031	CABLE.POWER.AC.1830mm Japan type

製品のお見積り・お問い合わせは  
株式会社プラズモニクジャパン までご連絡ください。  
連絡先：(045) 663 1402 メール：info@plazmonic.jp